

GlaxoSmithKline (GSK) (CFD March entry/10% Margin)

Key Risks – short term

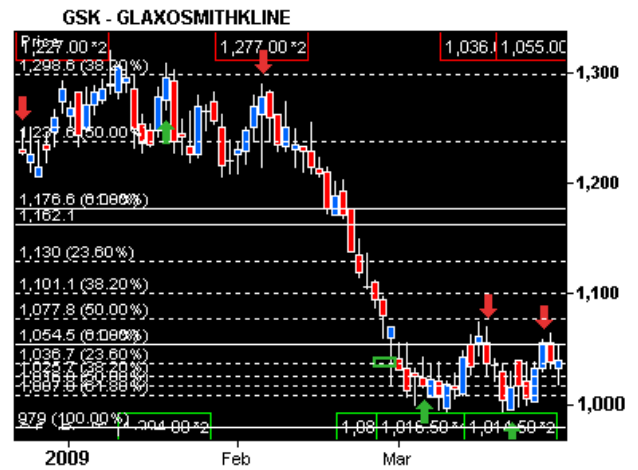
Sell signal was generated at 1055 p. Placing a Trailing Stop next day at 1055 p.

Target price	1162.1 p.	1150 p.	Resistance
		1130 p.	Resistance
		1101.5 p.	Resistance
		1060.5 p.	Resistance
Entry price	1014.5 p.	1007 p.	Support
		979 p.	Support
Stop Loss	975 p.	3.8%	

Highlights:

31/03 GlaxoSmithKline PLC (GSK) Tuesday said its pediatric vaccine Synflorix has been approved in the European Union, two months after securing the backing of the European Medicines Agency.

1/04 Irish pharmaceuticals company AGI Therapeutics PLC (A91.DB) said Wednesday long-awaited results from a phase III study of its irritable bowel syndrome drug Rezular will be published in June, as it reported a narrower full-year loss.



**Double bottom formation. Buy signal at 1014 p. short term
Sell signal was generated at 1055 p. Trailing Stop placed at this level.**